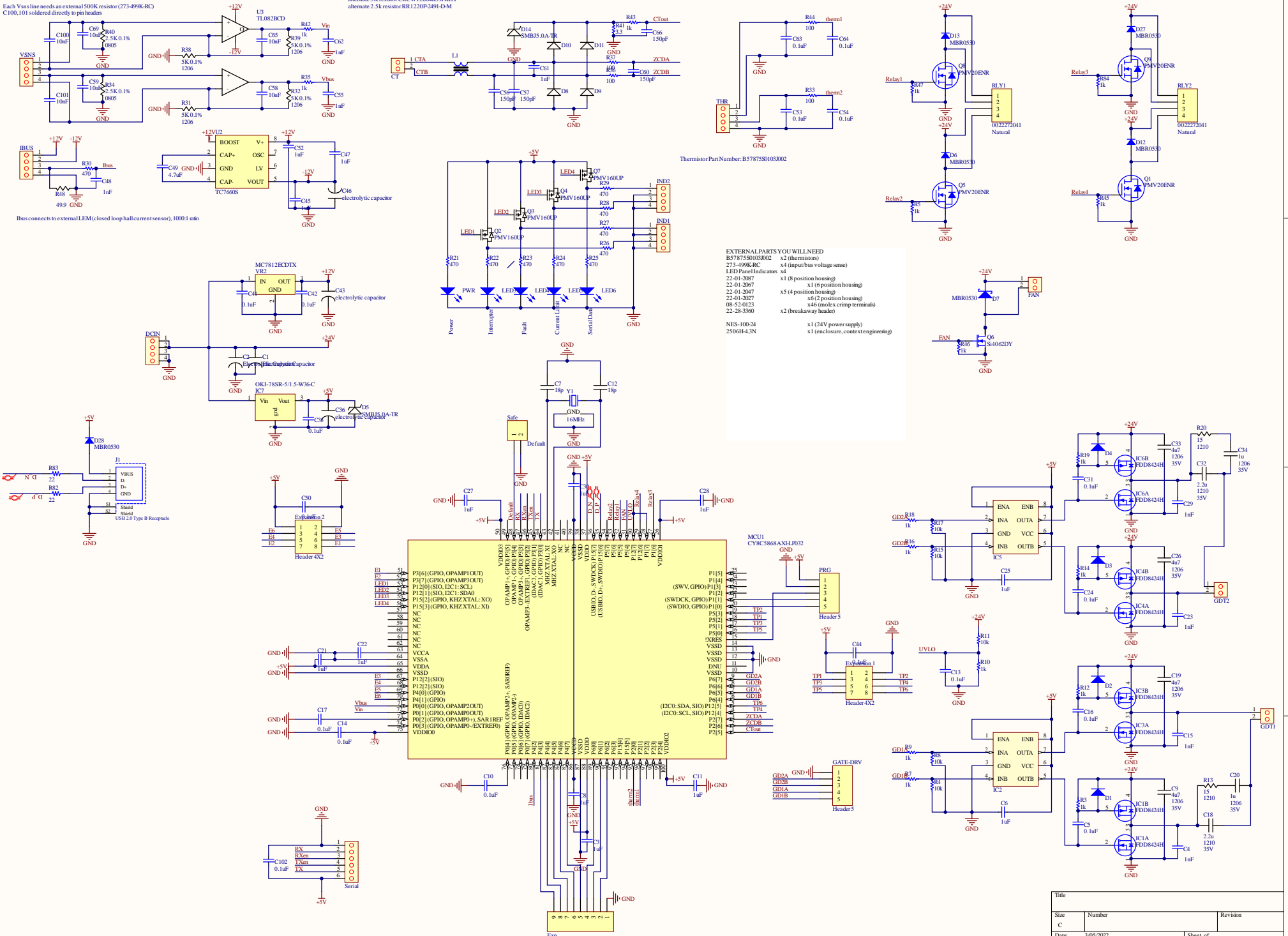


Each Vbus line needs an external 500K resistor (273-499K-RC)  
C100,101 soldered directly to pin headers

alternate 5K resistor CRCW12064R09RKEA  
alternate 2.5K resistor RR1220P3491-D3M



- EXTERNAL PARTS YOU WILL NEED**
- B57875S0103002 x2 (thermistors)
  - 273-499K-RC x4 (input bus voltage sense)
  - LED Panel Indicators x4
  - 22-01-2087 x1 (8 position housing)
  - 22-01-2067 x1 (6 position housing)
  - 22-01-2047 x5 (4 position housing)
  - 22-01-2027 x6 (2 position housing)
  - 08-52-0123 x46 (inlet crimp terminals)
  - 22-28-3360 x2 (breakaway header)
  - NES-100-24 x1 (24V power supply)
  - 2506H4-3N x1 (enclosure, context engineering)

Title		
Size	Number	Revision
C		
Date:	3/05/2022	Sheet of 1
File:	C:\Users\... \UD3B.SchDoc	Drawn By: